

GROWING UP in HACKNEY

Child-Friendly Places Supplementary Planning Document

Consultation Summary Document
October 2020



Child-Friendly Glossary

We appreciate that some of the vocabulary and language used in planning could be made more accessible for children and young people so below are a few words and phrases you may come across in this document.

Built environment: Refers to everything around us that is constructed or adapted by humans. It includes all buildings, physical features and spaces where people play, learn, work and live. Schools, homes, parks, shopping centres, transport infrastructure, recreational and community facilities are all part of the built environment.

Child-Friendly Principles: These are a set of values that have been chosen to help set out a vision for Hackney's built environment that accommodates children and young people of all ages, abilities and backgrounds.

Doorstep Play: The shared spaces near to home which support play and socialising for children and young people.

Independent Mobility: The freedom and ability to move through outdoor space without adult supervision.

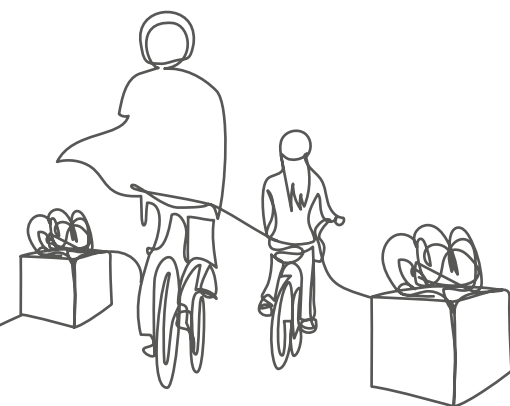
Play on the way: Opportunities for playful encounters in engaging landscapes should not be restricted to designated parks and playgrounds, but rather filter into everyday journeys in the city.

Post-occupancy: The process used to provide feedback on a building or outdoor space so that it can be improved and work better for future user needs.

Public Realm: The space between and surrounding buildings and open spaces that are accessible to the public and include streets, pedestrianised areas, squares and river frontages.

Scale: The tool of dividing up and categorising places of focus.

Supplementary Planning Documents: Documents which add further detail to the policies in the Boroughs Local Plan. These documents can be used to provide further guidance for development on specific sites, or on particular issues, such as design. In the case of the child-friendly places document, the purpose is guidance on design.



Child-Friendly Places Supplementary Planning Document (SPD)

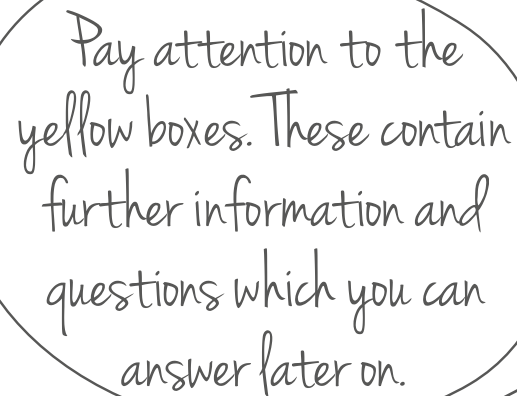
By establishing child-friendly Principles and design guidelines for the built environment, we can ensure that proposed developments and the design process recognise children and young people as essential users of buildings, streets and public spaces, with their own unique needs.

In this design guidance document, a 'child-friendly' urban built environment is defined as one that supports children and provides young peoples with equal opportunities to access and connect with nature, play and move around independently in safe, healthy and unpolluted streets and spaces.

The new borough-wide Local Plan 2033 (LP33) shapes future growth and regeneration in Hackney over the next 15 years. The purpose of the Child-Friendly Places SPD is to help set the LP33 policies in a child-friendly context. It seeks to ensure that adopted planning policies maximise their benefit for all children and young people who live, learn, work, and play in Hackney.

A child-friendly borough can be defined as a place that fulfills children's rights as citizens and ensures that their specific needs are met in neighbourhoods and development. Planning for child-friendly built environments is an evolving set of ideas concerned with shaping the physical features of neighbourhoods and cities to ensure that children and young

people have an opportunity to become more active and visible in the daily life of urban public spaces such as streets, parks and squares. Moreover, child-friendly built environment interventions and initiatives, aim to expand children's opportunities to have their views and experiences taken seriously by the development industry and those involved in decision-making.



Pay attention to the yellow boxes. These contain further information and questions which you can answer later on.

Have YOUR say on the Child-Friendly Places SPD

We would like to hear your thoughts on the draft document to help shape the document's next steps.

Please answer the questions we have asked and leave any general comments you through our dedicated webpage: **growingupinhackney.commonplace.is**

Alternatively please email us at **planmaking@hackney.gov.uk** or call **020 8356 1739**

This document and other supporting documentation on the draft Child-Friendly Places SPD consultation can be found online at: **growingupinhackney.commonplace.is**

Who are the design guidelines for?

Planners, architects and developers, to screen and scope the health and wellbeing impacts of development proposals against the child friendly design guidelines and Principles;

Children and Young People who live, study, visit and play in Hackney, to raise awareness of their rights in the built environment and help them to identify and recognise the key principles that help create more friendly and welcoming spaces for them;

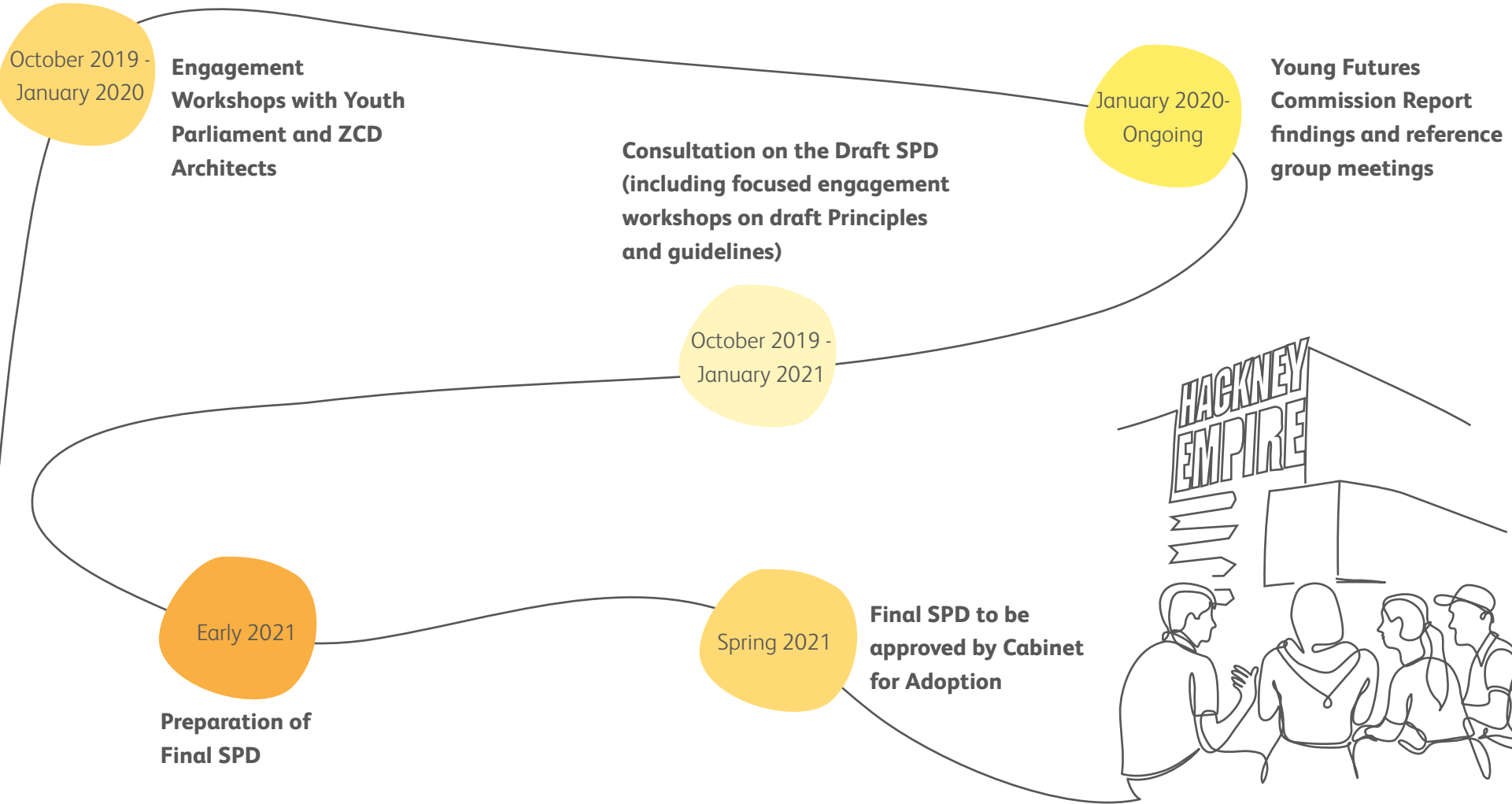
Public health and environmental health professionals, to comment on and scrutinise plans and development proposals against;

Council officers, to help identify and address the impacts of plans and development proposals to inform and support the processes of estate regeneration projects, street scene, public realm and parks initiatives, area regeneration programmes, plan-making and planning decisions

Neighbourhood forums, community groups, housing associations and individual residents to comment on major planning applications to help foster community engagement;

Key Dates Timeline

Below sets out how we have gathered information to feed into this document, work to date with young people and a proposed timeline for the next stages.



Child-Friendly Places Supplementary Planning Document: A Summary

This document has been prepared to provide a summary of the Child-Friendly Places Supplementary Planning Document. The consultation questions are included within each section and also at the end of this summary.

The draft SPD is structured in six parts:

Part 1: Moving towards a Child-Friendly Borough (p. 1)

Part 2: Policy, Research & Guidance Context (p. 9)

Part 3: Hackney's Child-Friendly Principles for the Built Environment (p.15)

Part 4: Child-Friendly Design Guidelines for Hackney's Built Environment (p. 27)

Part 5: Shaping My Borough: Engagement Guidelines, Resources and Best Practice (p. 123)

Part 6: Tools for Implementation & Delivery (p. 131)

This summary focuses on the draft Child-Friendly Principles for Hackney's built environment and the Child-Friendly Design Standard tool that can be used to ensure the Principles are met.

More information on all of the other sections can be found **growingupinhackney.commonplace.is**



The Child-Friendly Principles

Below are Hackney's child-friendly Principles that set out a vision for Hackney's built environment that accommodates children and young people of all ages, abilities and backgrounds.

The Principles are specific to Hackney and are a direct outcome of a series of engagement workshops, held

with members of the Hackney Youth Parliament and delivered by ZCD architects. The Principles were further developed following the recommendations from Hackney's Young Futures Commission's youth-led report (2020).

THE CHILD-FRIENDLY PRINCIPLES FOR THE BUILT ENVIRONMENT

1. Shaping my borough: to ensure children and young people in Hackney have the power to influence change in their borough

2. Doorstep play: to provide the opportunity for play and social interactions immediately outside the front door

3. Play on the way: to provide opportunities for informal play, things to do and see around the neighbourhood beyond designated parks and playgrounds

4. People before cars: to ensure that children, young people and their carers can move through Hackney safely by walking, cycling or public transport

5. Contact with nature: to build in opportunities for everyday access to and connections with nature

6. Places for all: to design socially inclusive and culturally sensitive places that are accessible and safe for all children and young people to enjoy together

7. Making spaces children and young people want to be in: to ensure open spaces are designed to be vibrant, active and safe environments where children and young people want to spend time

8. Health & wellbeing: to ensure design of outdoor environments contribute towards healthier foodscapes, reduced exposure to pollution and improved physical and mental wellbeing

1. To what extent do you agree or disagree with the draft Principles?

- Strongly Agree
- Agree
- Neither Agree or Disagree
- Disagree
- Strongly Disagree

Please tell us why?

2. Is there anything that should be added or changed? If yes, please tell us what.

Child-Friendly Design Guidelines

The draft guidelines are the technical tool to support, inform and assess how the Council plans, designs and maintains public spaces and development schemes to ensure that Hackney's built environment meets the needs and rights of children and young people.

We understand a child in Hackney will grow up and experience their neighbourhood along three main types of places within their built environment: the Doorstep, Streets and Destinations.

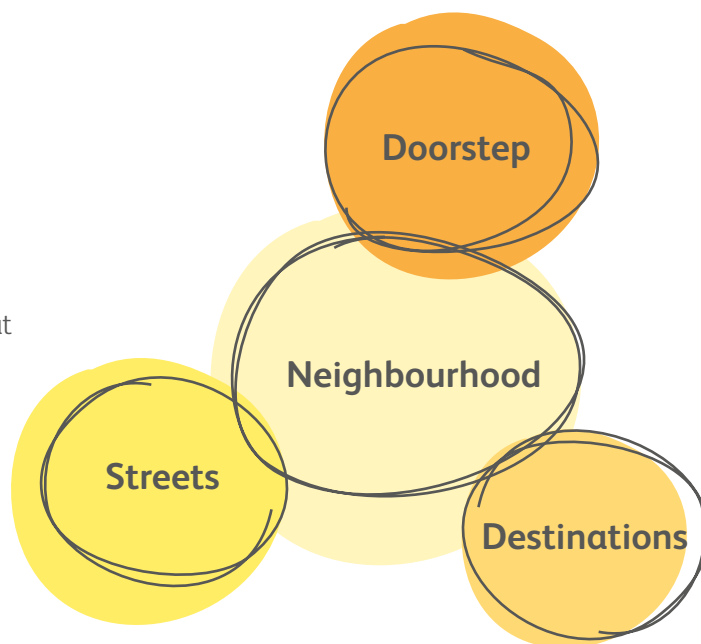
Doorsteps: this scale refers to the shared space that connects an individual's front door to wider public spaces and/ or streets

Streets: this scale refers to the network of routes that children, young people and their carers use to move between home and destinations within their neighbourhood

Destinations: this scale refers to the public spaces that children, young people and their carers make frequent journeys to use in Hackney

At each of the three neighbourhood 'place' scales, design guidelines are supported by the related local plan policies and case study examples in order to illustrate best practice and creative ways of incorporating child friendly guidelines to achieve successful development proposals.

More detailed information on the design guidelines can be found at: growingupinhackney.commonplace.is



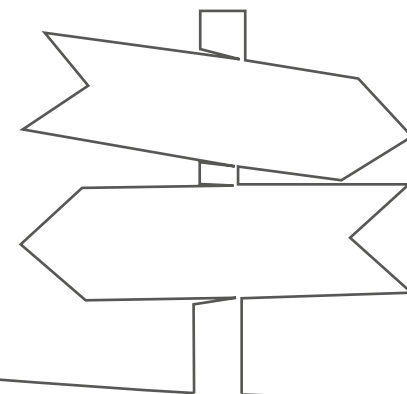
3. To what extent do you agree or disagree with the draft design guidelines proposed?

- Strongly Agree
- Agree
- Neither Agree or Disagree
- Disagree
- Strongly Disagree

Please tell us why?

4. Do the three scales (Doorstep, Streets and Destinations) capture the three main types of 'places' that a young person in Hackney will grow up and move through the Borough? If not, please tell us why?

5. Is there anything that should be added or changed? If yes, please tell us what.



Shaping My Borough: Engagement Guidelines, Resources and Best Practice

This section of the SPD outlines guidelines of best practice for engagement with children and young people in the Borough. This is to centre those who stand to benefit the most from long-term strategic planning – young people – at the forefront of built environment engagement.

The engagement guidelines, case studies and resources in this section demonstrate how we can meaningfully engage, consult and actively involve children and young people on issues regarding shaping the built environment at every stage, from the very beginning of projects and all the way through to post-occupancy analysis and maintenance. Some examples of best practice case studies include Build Up Flanders Way and Young Futures Commission.

More detailed information on the engagement guidelines and case studies can be found at: growingupinhackney.commonplace.is

The guidelines cover topics including:

- How and when built environment professionals should consult with children and young people on plans and designs.
- The location and time preferences to reach children, young people and carers
- The importance of using creative and interactive engagement tools

The design and construction of a new pocket park in an underutilized and underloved space identified by young people in the Borough

Involved young people aged between 10–12 from two local schools

Children and young people were engaged from the early concept stages to final design and construction of the project



BUILD UP - FLANDERS WAY

Shaping My Borough: Engagement Guidelines, Resources and Best Practice

HACKNEY YOUNG FUTURES COMMISSION

The Commission was led by two young Co-Chairs and two Vice-Chairs, recruited locally into paid roles.

The Commission has helped to secure direct links between young people, the local planning authority and local Members.



Largest consultation undertaken with young people, aged between 10-25 years. The Commission heard directly from over 2,500 young people.

Responses were collected through a variety of methods: focus groups, 1:1 interviews, online surveys, launch events, board meetings, filmed interviews, street-based outreach, teacher-led school classroom surveys and through discussions with local voluntary and charity organisations.

6. To what extent do you agree or disagree with the emerging Shaping my Borough guidelines?
 - Strongly Agree
 - Agree
 - Neither Agree or Disagree
 - Disagree
 - Strongly DisagreePlease tell us why?
7. Is there anything that should be added or changed? If yes, please tell us what.
8. Do you know of a project or organisation which you feel should be included here as a case study/ example of best practice?

Tools for Implementation & Delivery

This section of the SPD outlines the tools needed to inform and assess how development proposals ensure that children and young people's rights and specific needs are met in Hackney's built environment.

As the Principles and design guidelines for the Child-Friendly Places SPD have been developed, we have also considered the tools needed to deliver and effectively measure whether the SPD is delivering a child-friendly borough in Hackney.

The tools set out in this chapter help embed the Principles and design guidelines in the proposed scheme. We believe, if applicants consider the needs of children and young people in the Borough from the very initial point of inception then successful proposals will produce high quality, liveable and accessible schemes for all residents in Hackney.

More detailed information on the Tools for Implementation & Delivery can be found at: **growingupinhackney.commonplace.is**

The Tools for Implementation and Delivery are:

1. Child-Friendly Design Standard
 - a. Child Friendly Impact Assessment
 - b. Design Awards / Review Panels
2. Statement of Community Involvement
3. Area-Based & Infrastructure Delivery Plans



Questions

We want to hear the views of everyone, of all ages, who live, visit, study, work and play in Hackney.

Please answer the questions below through our dedicated webpage: **growingupinhackney.commonplace.is**

Alternatively, please cut and paste the adjacent questions and email your responses to **planmaking@hackney.gov.uk**

1. To what extent do you agree or disagree with the draft Principles?

- Strongly Agree
- Agree
- Neither Agree or Disagree
- Disagree
- Strongly Disagree

Please tell us why?

2. Is there anything that should be added or changed? If yes, please tell us what.

3. To what extent do you agree or disagree with the draft design guidelines proposed?

- Strongly Agree
- Agree
- Neither Agree or Disagree
- Disagree
- Strongly Disagree

Please tell us why?

4. Do the three scales (Doorstep, Streets and Destinations) capture the three main types of 'places' that a young person in Hackney will grow up and move through the Borough? If not, please tell us why?

5. Is there anything that should be added or changed? If yes, please tell us what.

6. To what extent do you agree or disagree with the emerging Shaping my Borough guidelines?

- Strongly Agree
- Agree
- Neither Agree or Disagree
- Disagree
- Strongly Disagree

Please tell us why?

7. Is there anything that should be added or changed? If yes, please tell us what.

8. Do you know of a project or organisation which you feel should be included here as a case study/ example of best practice?



Get in touch

Visit our dedicated webpage:

www.hackney.gov.uk/child-friendly-spd

Email your comments to:

Planmaking@hackney.gov.uk

Consultation from 27 October 2020 - 12 January 2021

If you are a local group or school and would like to get involved with developing the Supplementary Planning Document, then get in touch at **Planmaking@hackney.gov.uk** or call **020 8356 1739**